

## **Bid Addendum #1**

### **Pismo Preserve Parking Area, Roadway Improvements, Accessible Trail**

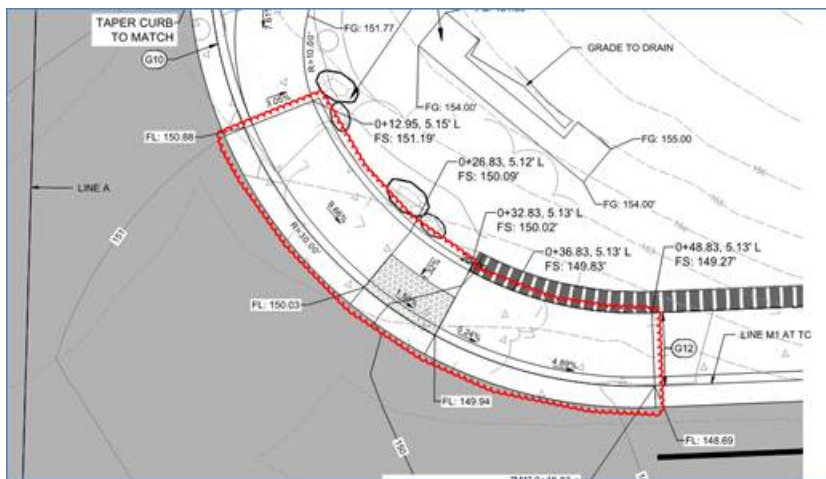
April 23, 2018

This Addendum shall be considered part of the bid documents for the above-mentioned project. In the case of any conflicting information, the provisions of this addendum supersede the original bid documents and any prior addenda.

**BIDDERS MUST ACKNOWLEDGE THE ADDENDUM WITH THE BID SUBMITTAL**

#### **CLARIFICATIONS**

1. Bid Worksheet Item M2-1, HMA Paving – Mattie Road. This item includes the asphalt ramp at the end of sidewalk on Mattie road shown on the plans.
2. Bid Worksheet Item M2-9 Curb Ramp. The 26 SY for this item is the area generally shown below in red.



3. Bid Worksheet Item M6-1, Traffic Control - Mattie Road Improvements includes the preparation of a traffic control plan. A plan is not provided by the owner or engineer. The traffic control plan should include maintaining at least one lane open with traffic control, except for short periods during connections or lane control changes.



CIVIL AND  
TRANSPORTATION  
ENGINEERING

CONSTRUCTION  
MANAGEMENT

LANDSCAPE  
ARCHITECTURE

MECHANICAL  
ENGINEERING

PLANNING

PUBLIC WORKS  
ADMINISTRATION

SURVEYING /  
GIS SOLUTIONS

WATER RESOURCES

WALLACE GROUP  
A California Corporation

612 CLARION CT  
SAN LUIS OBISPO  
CALIFORNIA 93401

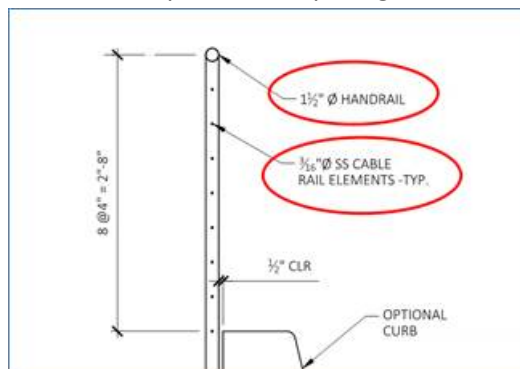
T 805 544-4011  
F 805 544-4294

[www.wallacegroup.us](http://www.wallacegroup.us)

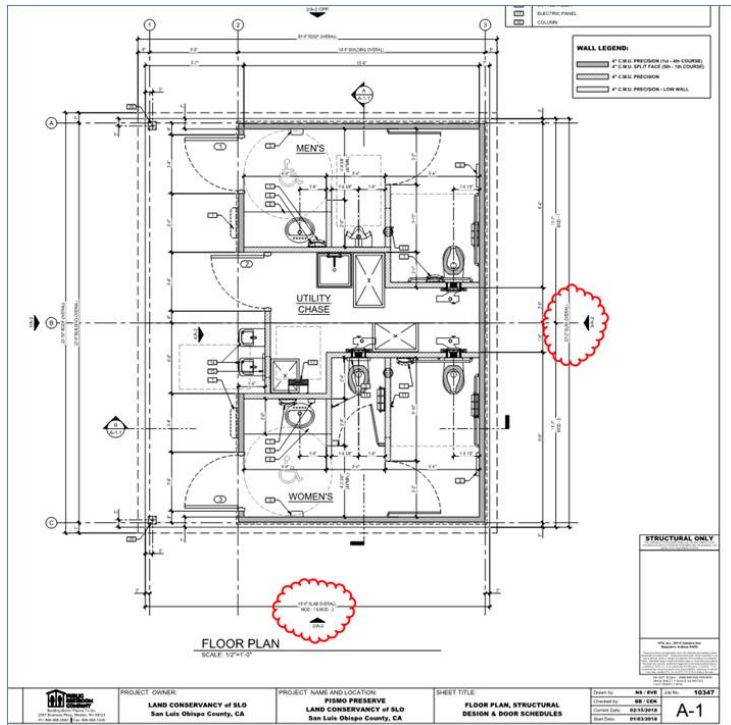


4. Bid Worksheet Item P1-7, Geotextile (Woven) The Woven Geotextile is used only under the Equestrian Area. Geogrid is used under the parking lot pavement, and also under the parking lot fill. See detail 6/C2.9 and the soils report.
5. Bid Worksheet Item P1-8, Geotextile (Geogrid), includes both layers of Geogrid. Detail 6/C2.9 of the Civil drawings (also Plate 2 of the Geotech report) shows the limits of the geogrid under the fill and shows it not extended under the shallow fill areas. The exact limits will be determined by the geotechnical Engineer in the field. The quantity in the Bid Worksheet is intended to reflect this.
6. Bid Worksheet Item P2-2, Class 2 Aggregate Base - General Parking and Entry Drives includes the 8-inch aggregate base for the equestrian area. Below are the base areas we intended to be included. Base material under concrete is included in the concrete cost.
7. Bid Worksheet Items P10-1 through 6, Retaining Walls P1 through P7. The concrete stem walls must include sub drainage at the back of wall. Use weep hole drains per Caltrans Standard Drawing B0-3 with the drain set 1-inch above the FG on the low side, or approved equivalent.
8. Bid Item A5-2 Steel Bridge (50x12).
  - a. Updated Bridge Drawings have been uploaded to the website
  - b. The steel girders are to be painted per Caltrans Standard Specifications Section 59.
  - c. The bridge beams do not include camber, as shown on the drawings.

- d. The bridge railing includes a top rail and strands of steel wire that stretch between the posts at 4" spacing, as shown on the drawings.



9. Bid Item P6-5, Type OCP Inlet. This new bid item has been added, for the structure on the left side of the entry drive just uphill from the cattleguard, Sheet C2.2
10. Bid Item P8-2, Trash Bin & Enclosure – This item is model RA2/G by RA Thomas Mfg (color to be weathered wood)
11. Bid Item P5, Electrical System – The electrical work will generally occur over a 12 week period and will need to be coordinated with the grading and site improvements.
12. Bid Item P9, Restroom – The schedule and coordination should include 5 days for the restroom installation. A typical installation schedule is:
- General Contractor prepares the pad and access
  - Monday PRC trenches the underground at the pad
  - Tuesday the general Contractor arranges for the inspection of the underground (directly under the building). Then PRC back fills with the 30-mesh sand (masonry sand) that the General Contractor has provided onsite.
  - Wednesday PRC sets the building.
  - Thursday PRC finishes connections and touch up paint, Final walk with client
  - Friday reserved as back up if any complications occurred during installation
13. Bid Item P9, Restroom
- The Public Restroom Company (PRC) work includes utility extensions within 6-ft of the building. The General Contractor connects the extensions to the water and sewer.
  - The restroom will be delivered including a concrete slab that is part of the premanufactured building. The slab limits are included in the restroom drawings, and shown approximately in red below:



14. Bid Worksheet Item P11-10 Entry Monument Signs – this item is added to the Bid Worksheets. The entry monuments are to be included in the bid.
15. Bid Worksheet Items A6-1 through A6-5, Retaining Walls T1 – T-5 - The steel posts and caps for the Sutter Retaining Wall are plain steel.
16. Pressure Treated Wood. Where items call for Pressure Treated Wood – it shall be brown colored.
17. Vegetation Clearing – Vegetation from clearing and grubbing may be left onsite in an organized brush-pile in an area approved by the owner.
18. Directional Drill Alternate Bid. The Bid Form has been modified to include the following alternate bid items. The owner reserves the right to accept either the original items or the alternate bid.
  - a. Alternate to Bid Worksheet Item M3-1, 10-inch HDPE Waterline - HDD – Change the HDD material to 8" C900 Fusible PVC.
  - b. Alternate to Bid Worksheet Item M3-2, 10-inch C900 PVC Waterline – Change the material to 8-inch C900 PVC.
  - c. Alternate to Bid Worksheet Item M3-3, 10-inch WL Tie-in with Gate Valve – Change the tie-in and valves to 8-inch.

Alternate to Bid Worksheet Item P4-1, 5-inch HDPE HDD Sewer Lateral – Change the material to 4-inch fusible PVC SDR-35

19. Quantity Updates. Quantities in the Bid Worksheets are updated for the following items:

- a. P1-4 Excavation - Parking Area, changed from 2151 to 2186 CY
- b. P1-5 Embankment - Parking Area, changed from 3266 to 3822 CY
- c. A1-1 Excavation - ADA path, changed from 6186 to 969 CY
- d. A1-2 Embankment - ADA path, changed from 4985 to 4088 CY
- e. M2-11 Roadside Signs, added bit item, 1 EA
- f. P2-19 Roadside Sign, changed from 7 to 9 EA
- g. P6-1 6-inch HDPE, changed from 63 to 98 LF.
- h. P6-5, Type OCP Inlet – New Item
- i. P11-10 Entry Monuments – New Item